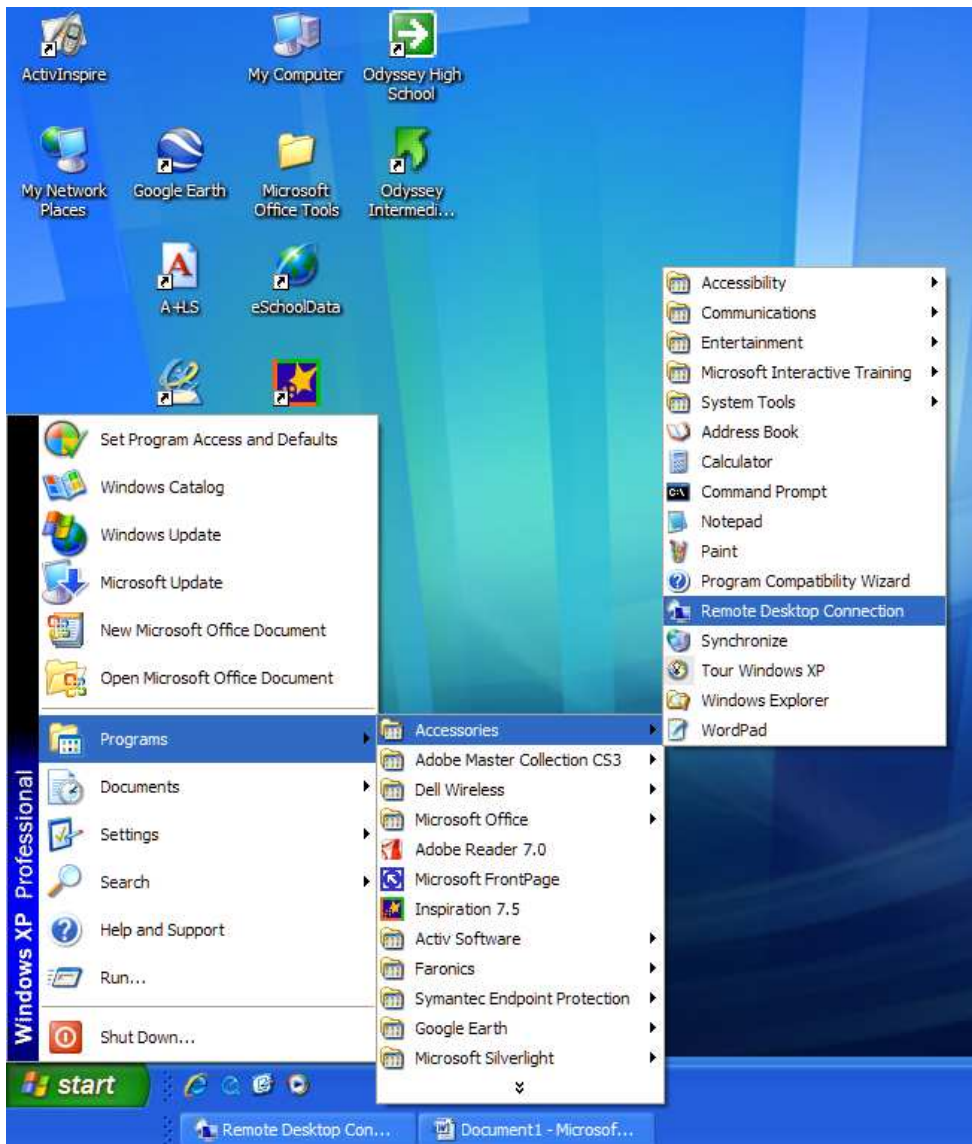




Connection from outside of the Hornell CSD Network Tutorial

Windows XP Users:

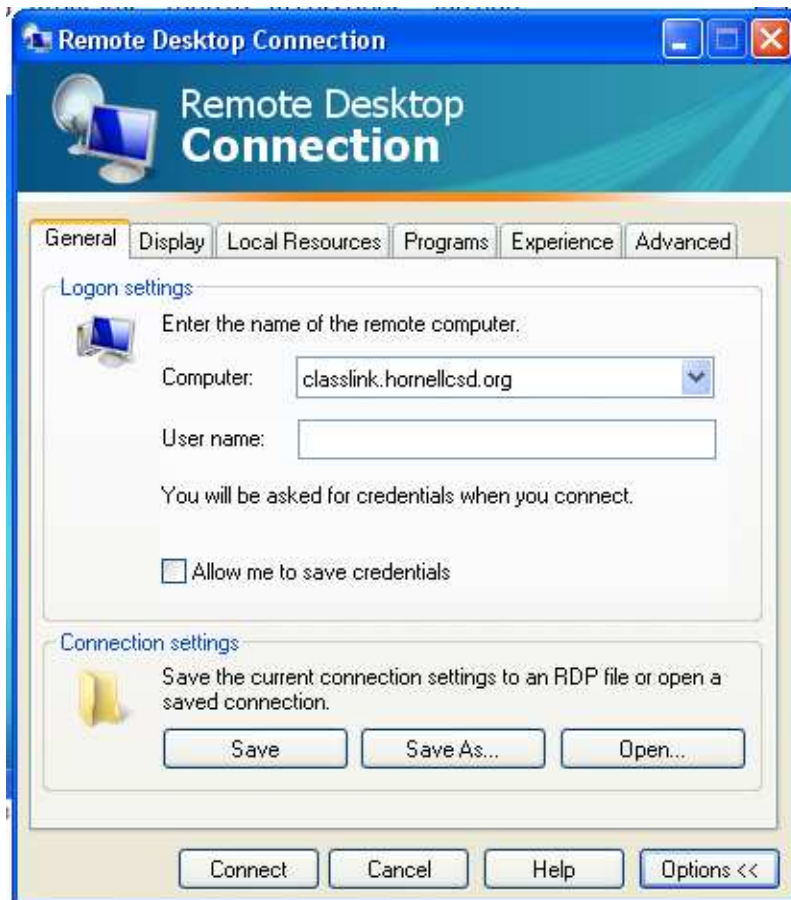
1. Start by opening the start menu and navigate to “Programs,” then to “Accessories,” and find “Remote Desktop Connection.”



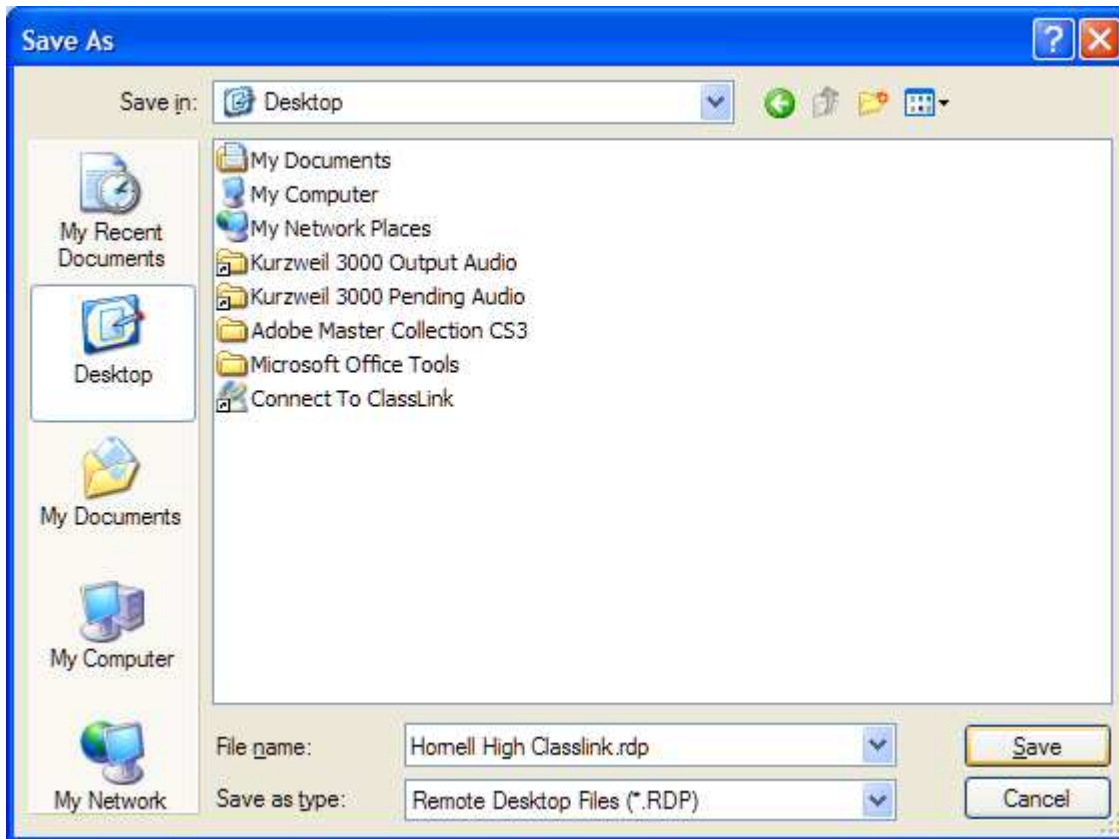
2. Once Remote Desktop Connection has been opened, enter **classlink.hornellcsd.org** into the “Computer” field.



3. Click on the “Options >>” button and Click on the “Save As...” button.



4. Rename the Remote Desktop Connection shortcut to something like “Hornell High Classlink,” and Save to Desktop.



5. Notice the newly created Desktop Icon. Double clicking this Icon will connect you to the Hornell Class-link System.

